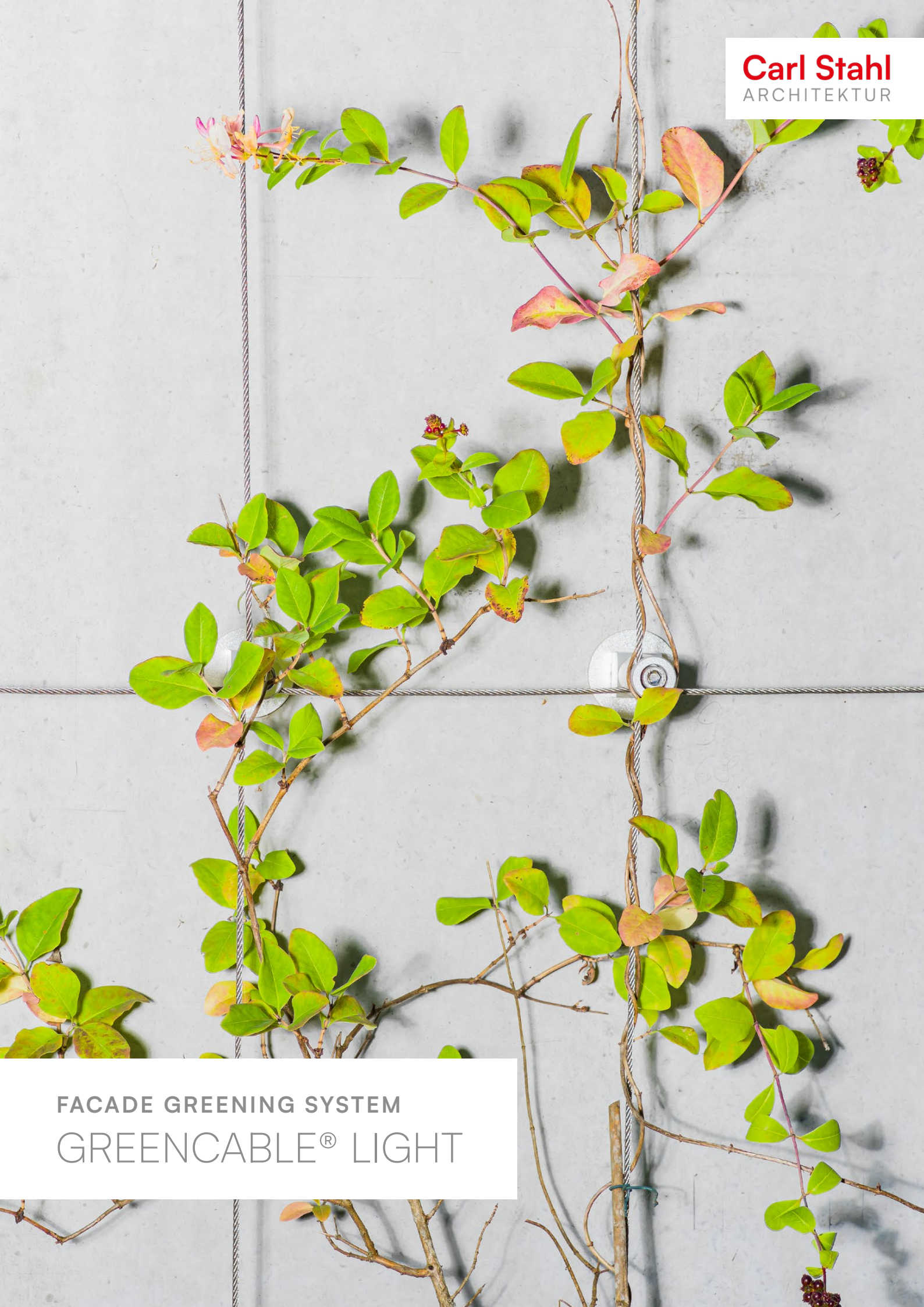
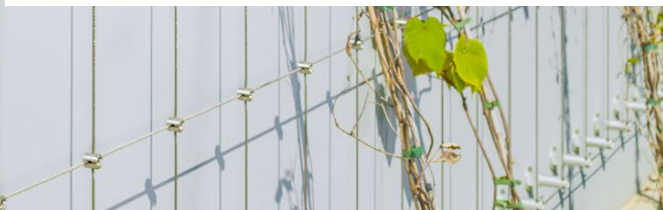


FACADE GREENING SYSTEM
GREENCABLE® LIGHT





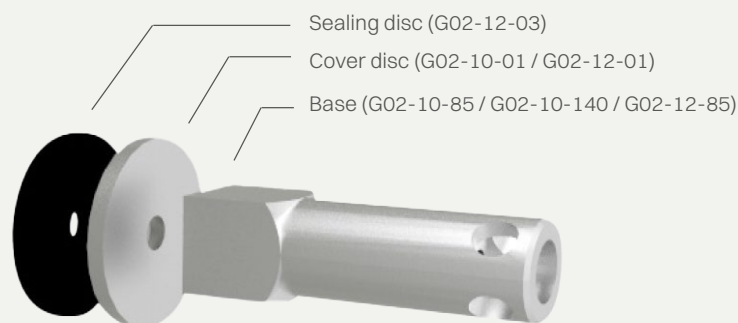
Thanks to the uncomplicated assembly and the great flexibility in design, the GREENCABLE®- LIGHT system is extremely versatile and can be individually expanded. It guarantees durability and a stylish appearance even during the growth phase of the climbing plants. The special A4 stainless steel cables can be guided horizontally, vertically or cross-wise through the bases, creating green patterns on the facades. Without the use of special tools, this trellis for climbing plants combines technology and simplicity and enables facade greening exactly as you want it.



GREENCABLE LIGHT SYSTEM

THE SYSTEM CONSISTS OF

- 1x GREENCABLE Base with screw,
- 1x GREENCABLE-Disc and
- 1x Sealing disc Ø60mm - made of cellular rubber for uneven structures.

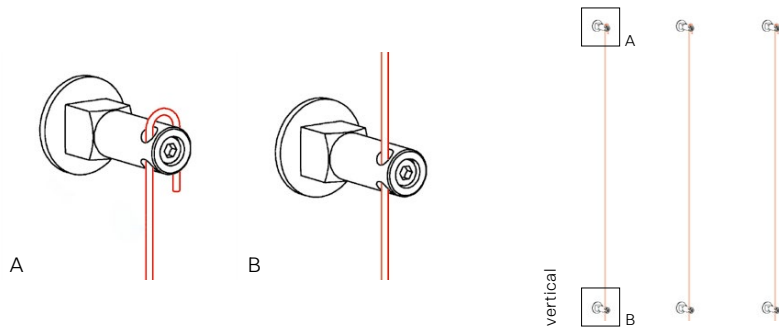


A highly flexible wire rope made of rust and acid-resistant stainless steel serves as a climbing aid. The surface of the aluminum components is colorless anodized and shimmers in matt silver. The system can also be retrofitted with climbing rungs. Thanks to the metric thread on the base foot, the system can be combined with all common types of fastening. Specification texts and CAD datasets are available for download, and video-supported installation instructions complete the service.

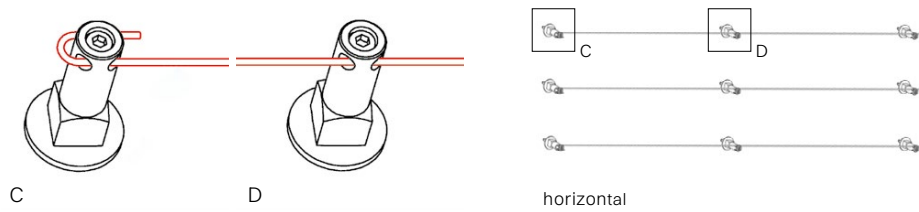
OVERVIEW

INDIVIDUAL POSSIBILITIES

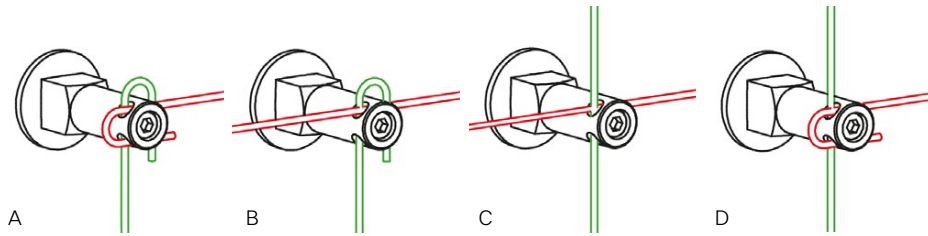
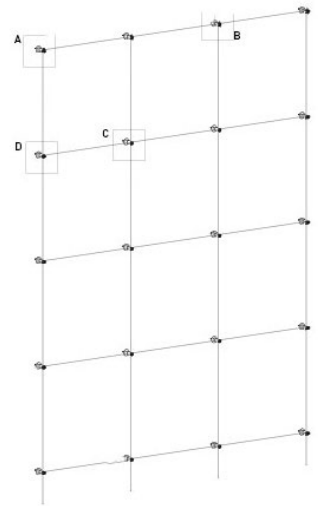
Type / Description	GRENCABLE® Light - vertical
Plant species	Climber / Winders acc. GRENCABLE plant list



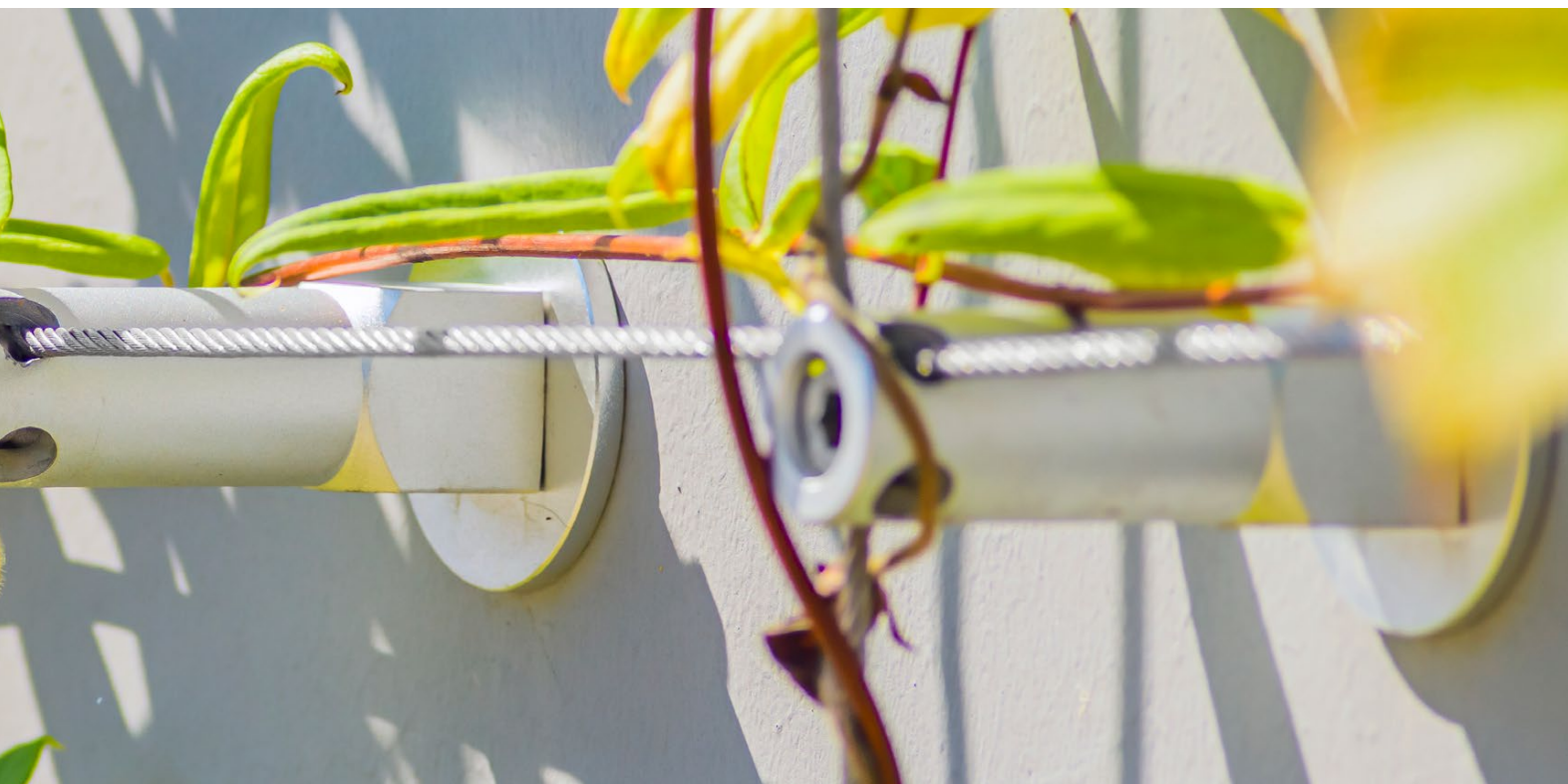
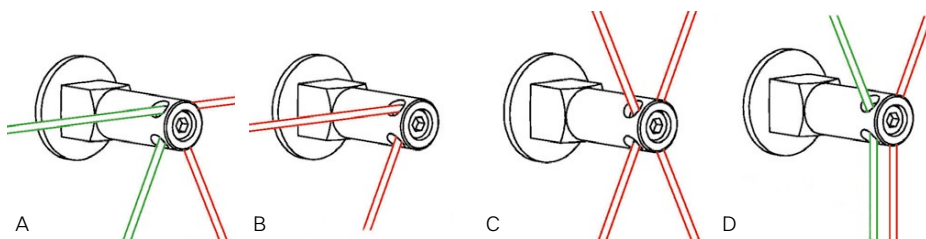
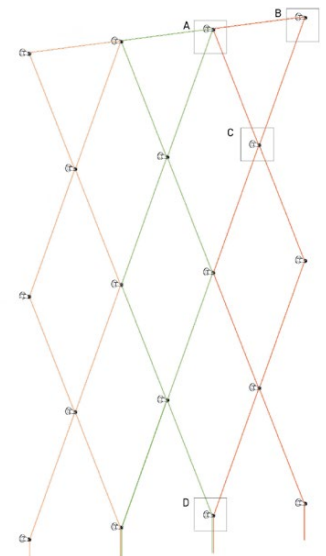
Type / Description	GRENCABLE® Light - horizontal
Plant species	spreading clipper acc. GRENCABLE plant list



Type / Description	GRENCABLE® Light - right angle
Plant species	Leaf stem and shoot Climbing alternativ Climber / Winders / Spreading clipper acc. GRENCABLE plant list

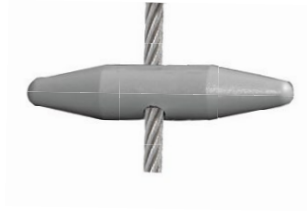


Type / Description	GRENCABLE® Light - rhombus as possible special form
Plant species	Climber / Winders or spreading clipper, depending on the shape, also leaf stem climbers / shoot climbers according to the GRENCABLE® plant list





climber stud (G01-05-04)
with screw

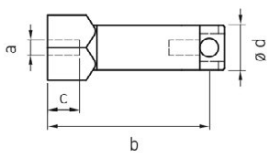


climber stud - plastic
(G01-04-04)



cross clamp (858-0400-01)
rod \varnothing 4 mm (922-0400)

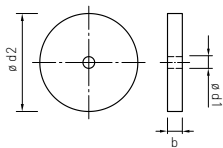
Greencable® - Base with screw



part number	a	b	c	\varnothing d
G02-10-85	M10	85	30	29
G02-10-140	M10	140	30	29
G02-12-85*	M12	85	45	29

Material Aluminium anodised
* with side clamping screw

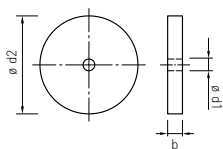
Greencable® Disc



part number	b	\varnothing d1	\varnothing d2
G02-10-02	5	10,5	60
G02-12-02	8	12,5	60

Material Aluminium anodised

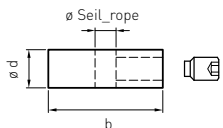
Sealing Disc



part number	b	\varnothing d1	\varnothing d2
G02-12-03	8	12	60

Material EPDM soft

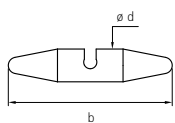
Climber stud with screw



part number	b	\varnothing d	\varnothing rope
G01-05-04	30	10	4

Material Aluminium anodised

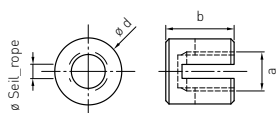
Climber stud - plastic



part number	b	\varnothing d	\varnothing rope
G01-04-04	50	10	4

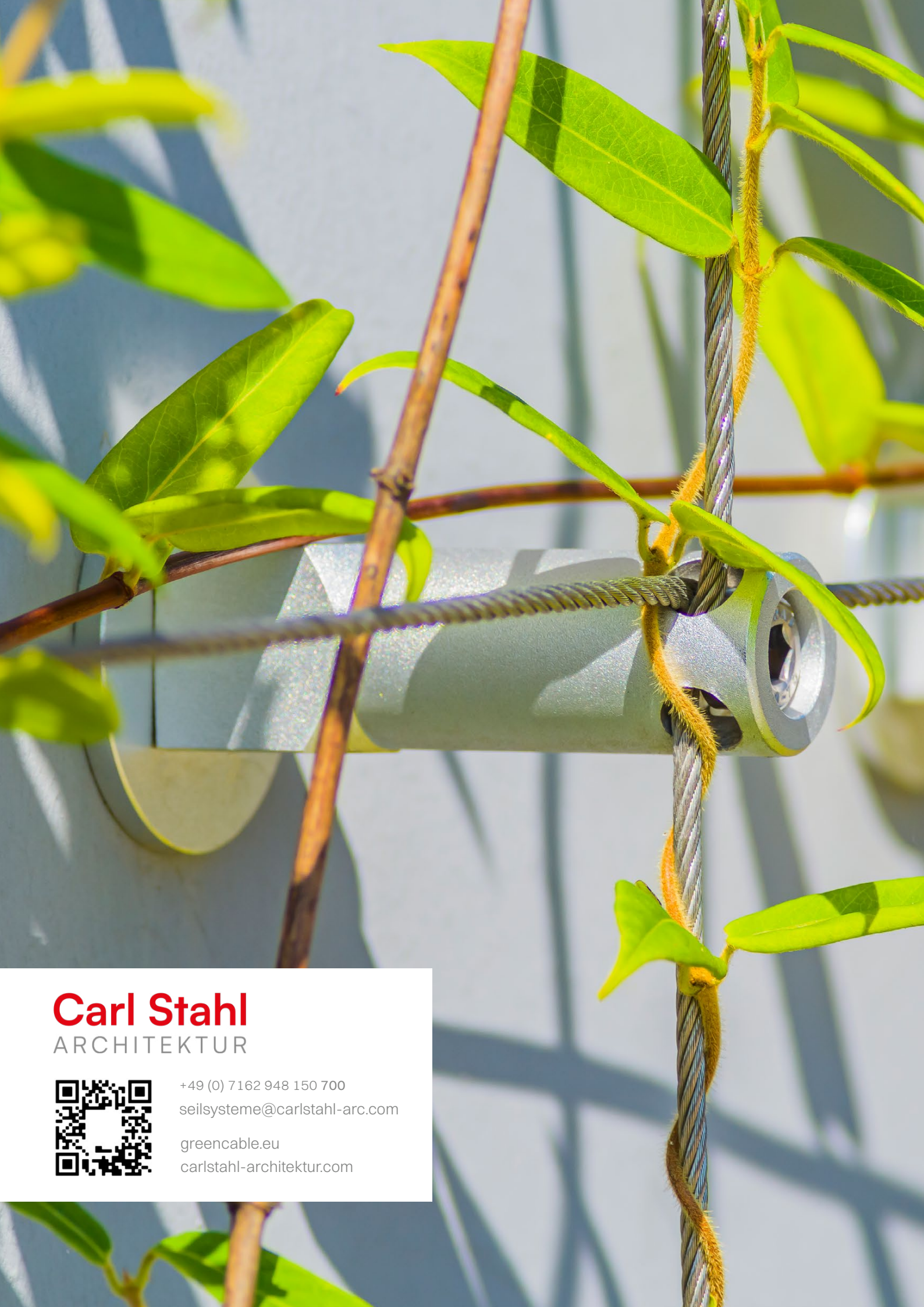
Material plastic grey, UV resistance

Cross clamp, adjustable



part number	a	b	\varnothing d	\varnothing rope
858-0400-01	M12	19,5	20	4

Material AISI 316



Carl Stahl

ARCHITEKTUR



+49 (0) 7162 948 150 700
seilssysteme@carlstahl-arc.com

greencable.eu
carlstahl-architektur.com